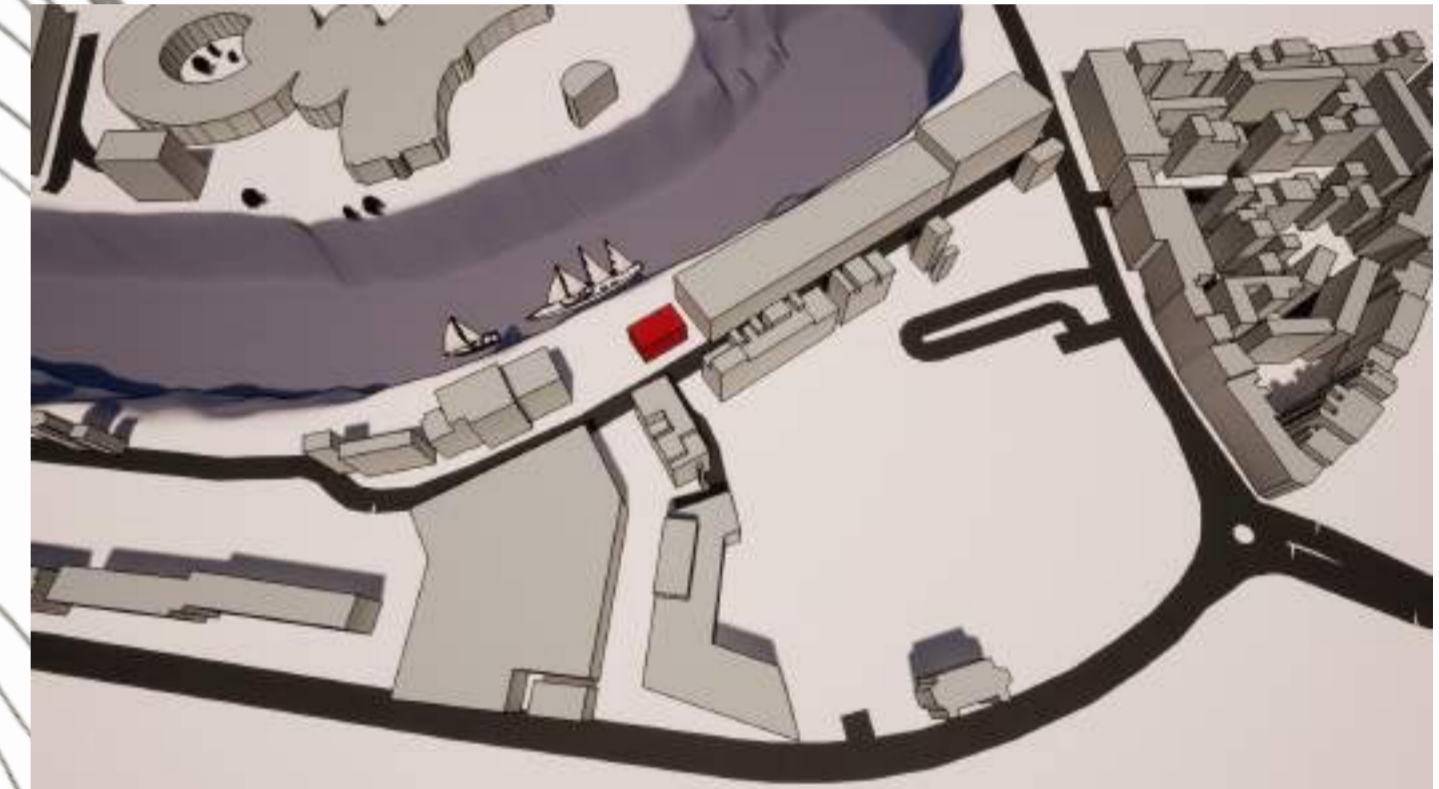
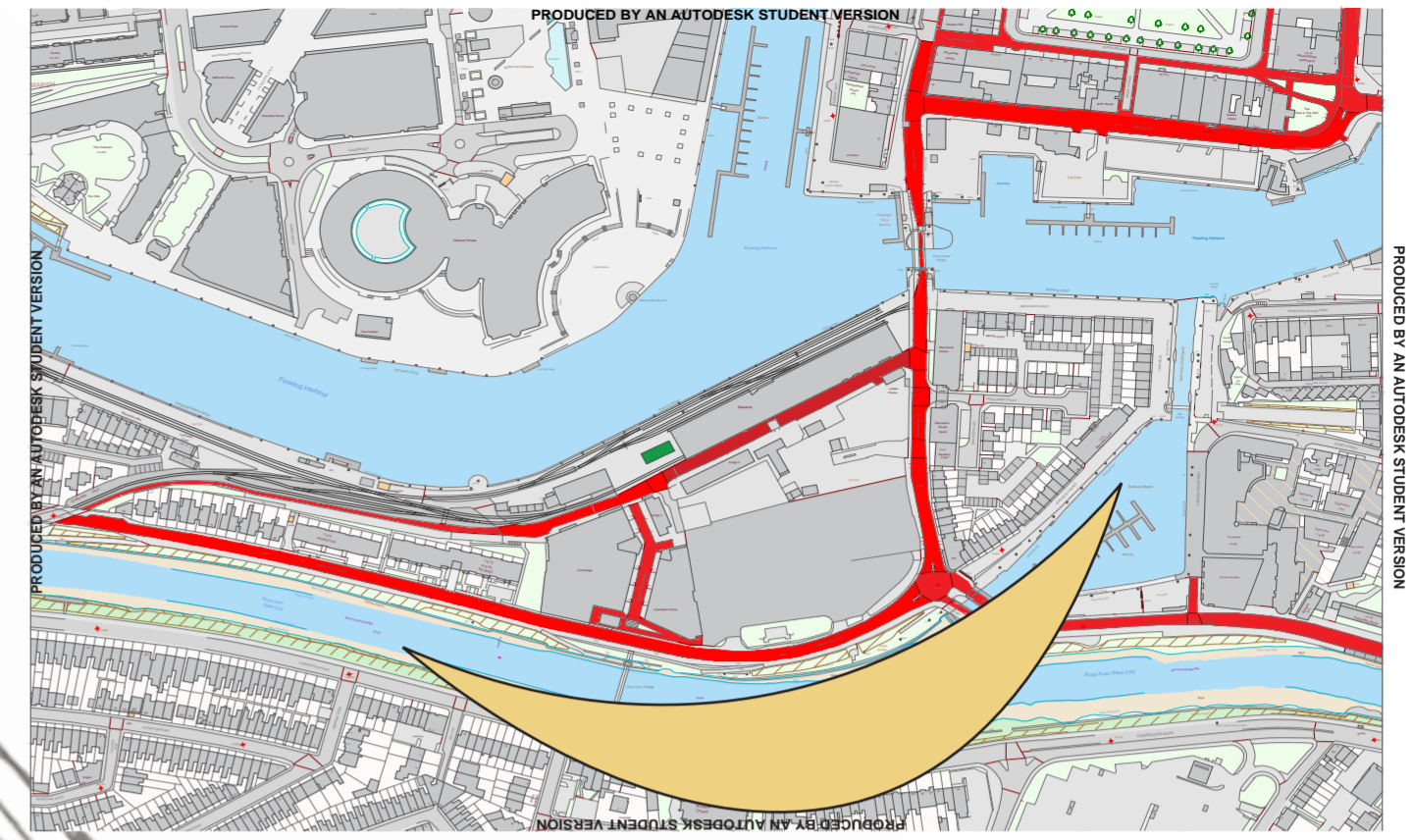


M A S U

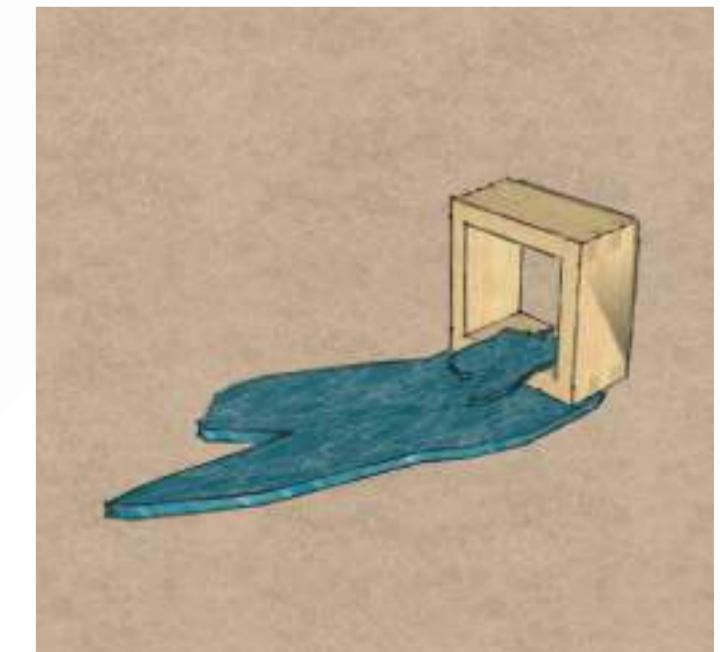
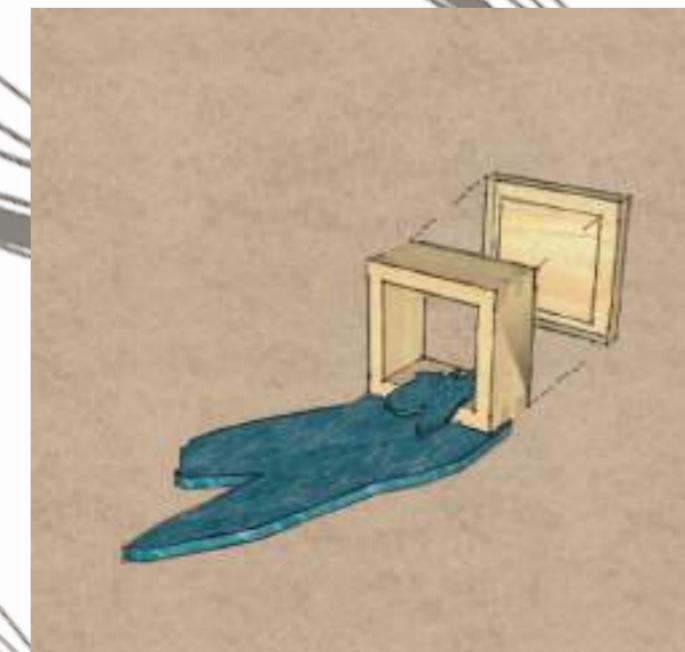
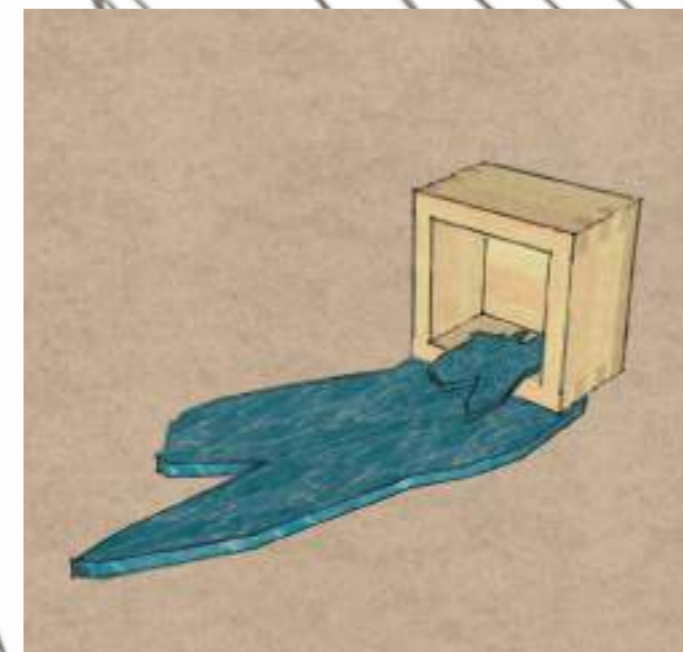
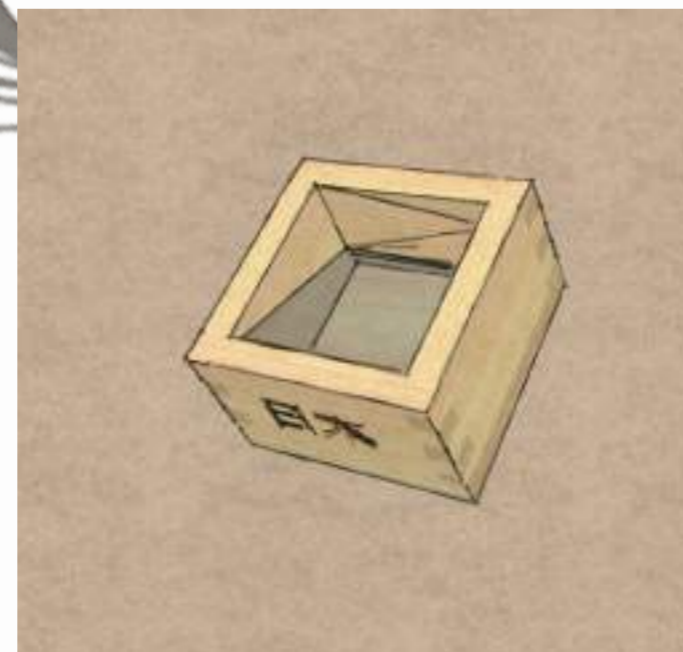
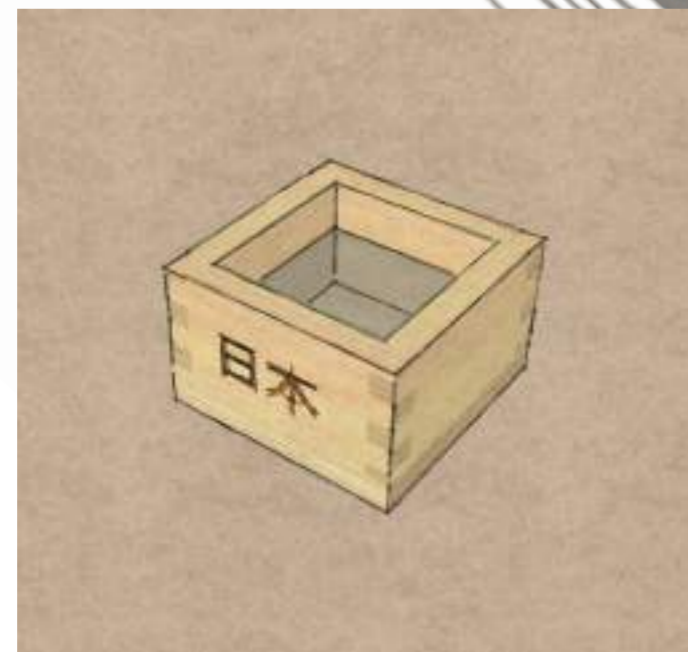
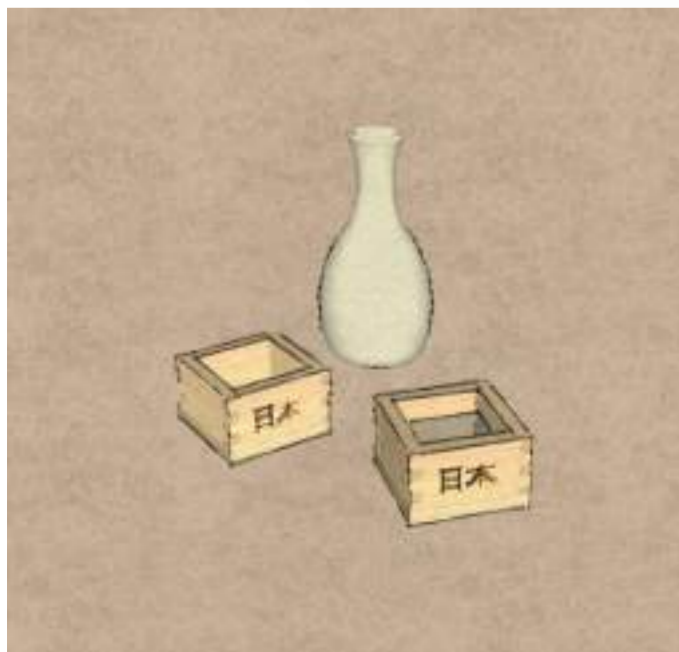
R E S E A R C H / C O N C E P T

KRITAMUK CHIRAAMPHAIRAT
17018677
UADASQ - 30 -3

The idea of a seamless wind came from the idea to use wind as part of my design, as wind is the best renewable energy in the UK, but I wanted it to connect the idea of seamless with to the rest of my design so I look into the Japanese wind god (Fujin). He always carry around this silk scarf that move effortlessly in the air and it represent power. I'm also using the Masu cup design to combine with Fujin scarf to create the design of the pavilion. As the Masu have it own unique history where host would pour sake to overflow into the Masu cup like a waterfall. The overflowing is an act of kindness and generosity by the host to show their appreciation for your friendship (or, in a restaurant setting, for your business). It also works as a little act of celebration, to lift the spirits and to enjoy the present state of life. Watching the sake overflow and not knowing whether it will tip over presents a beautiful moment of suspense, when time seems to almost slow down. By introducing this moment of suspension, this ceremony keeps your mind in the present moment, focused only on the beautiful waterfall of sake. And ceremonies, like any other ritual, come with rules.

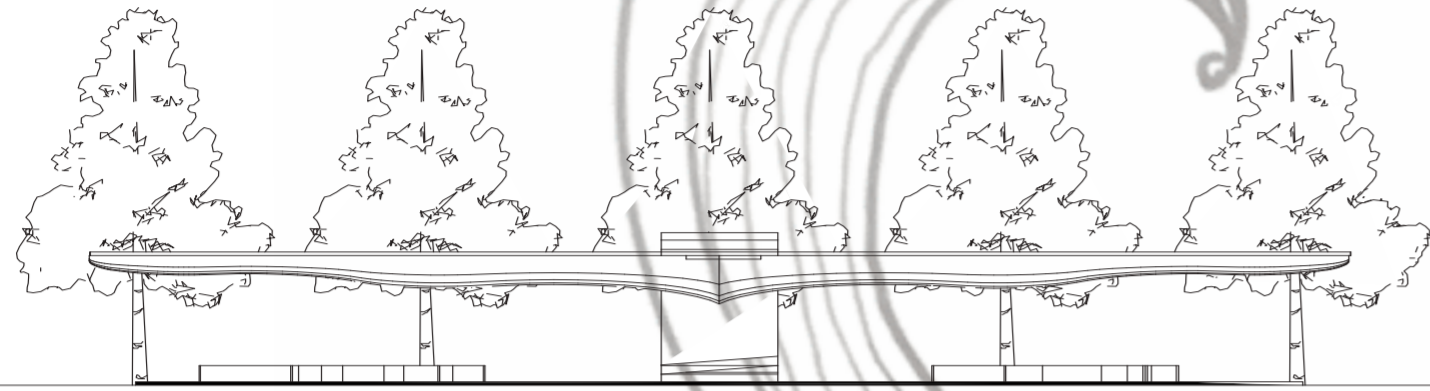


The location of the site sit on the museum square next to Mshed, the reason for the location is because theres's alot of restaurant and cafe and shopping places in the area (the location is next to wharping warf). the pavillion act as a place for people to come sit and eat there lumch or have a conversation. they might learn about something new at the meseum and about renewable energy.



M A S U

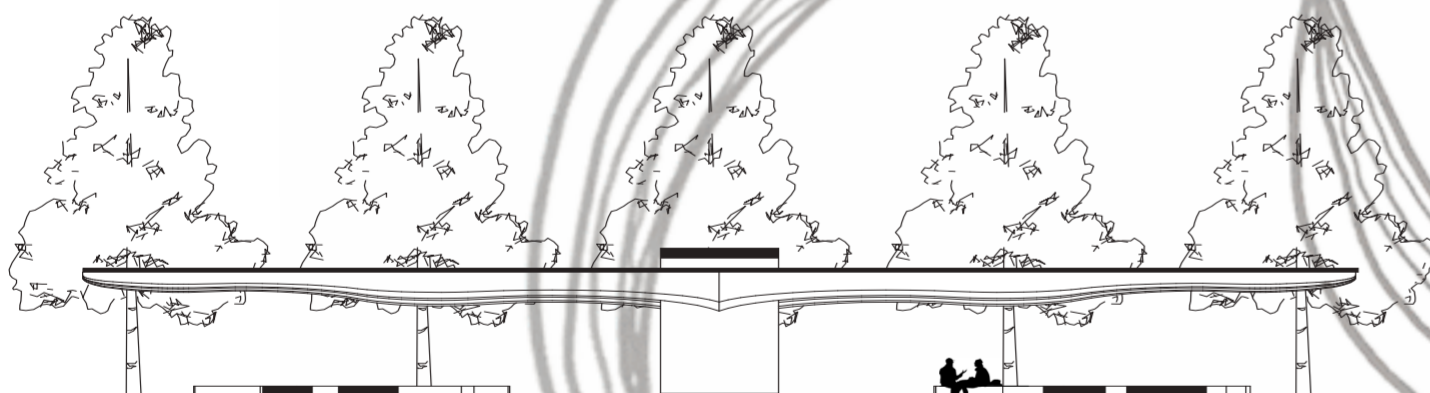
ELEVATION / SECTION



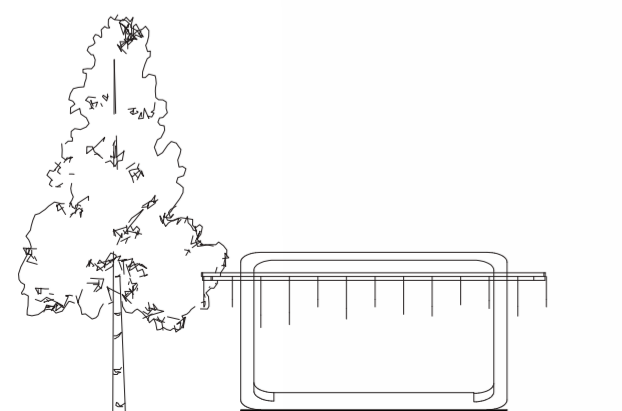
North Side Elevation



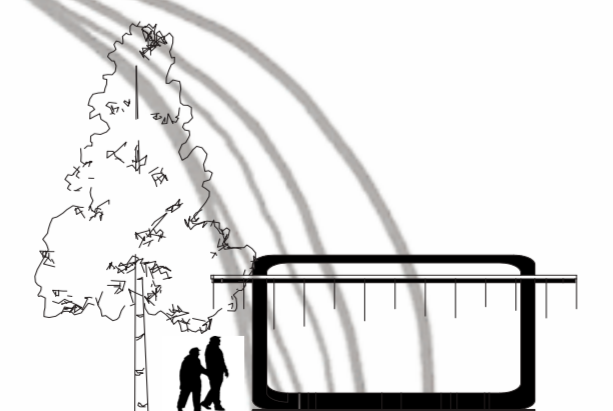
South Side Elevation



North Side Section



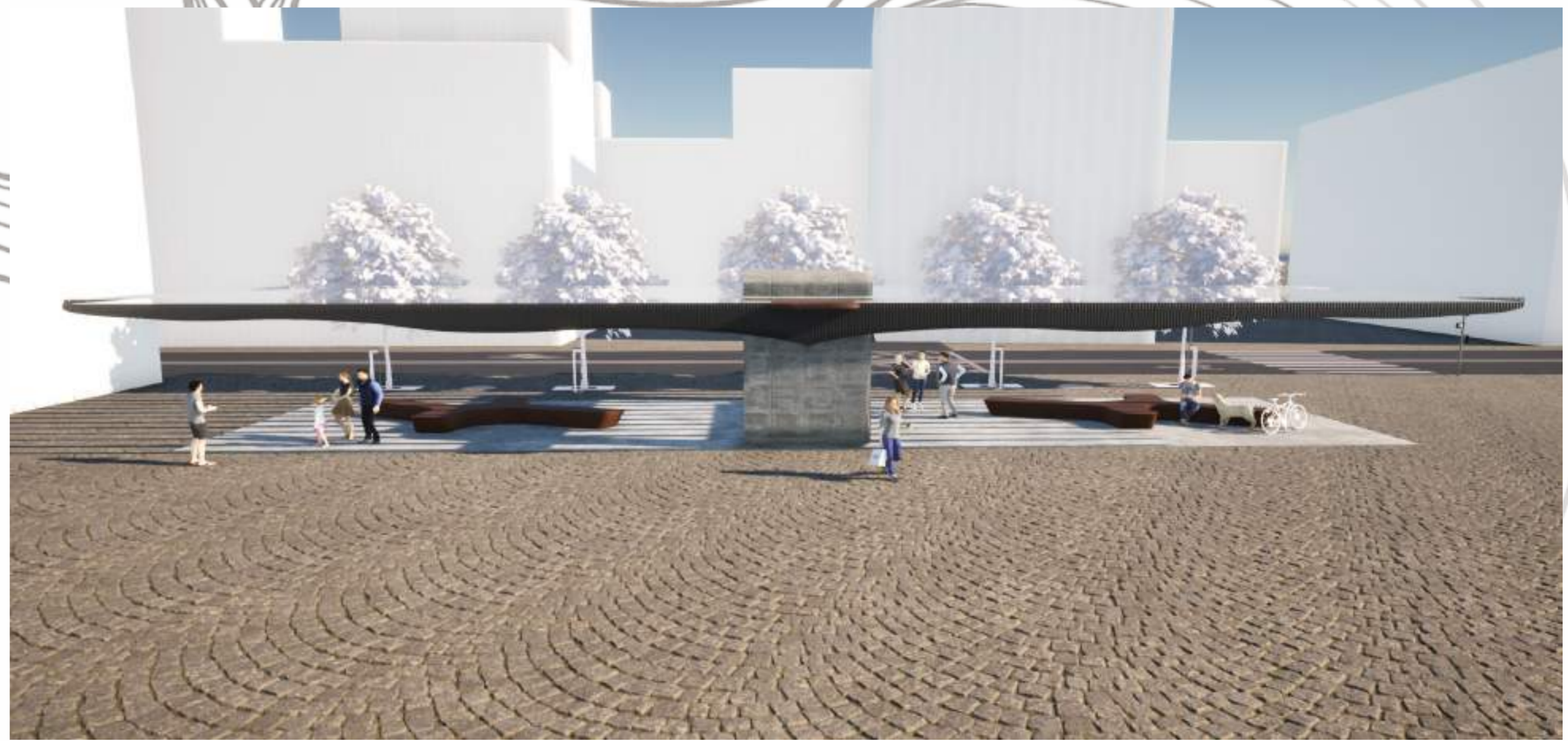
East Side Elevation



East Side Section



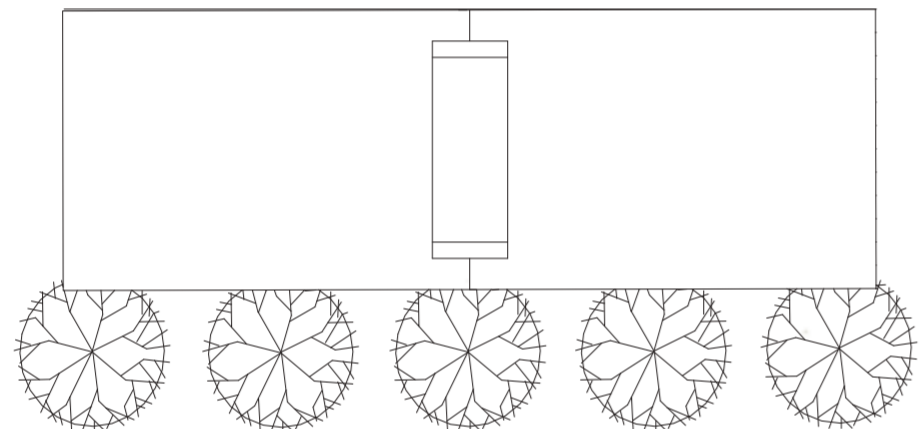
The light effect between night and day is very different the 2 visual is giving a different feel and tone. For the moving water installation it will still look like a water flow as the light running through the fabric would create the illusion of moving water, so the installation can be seen at day and night.



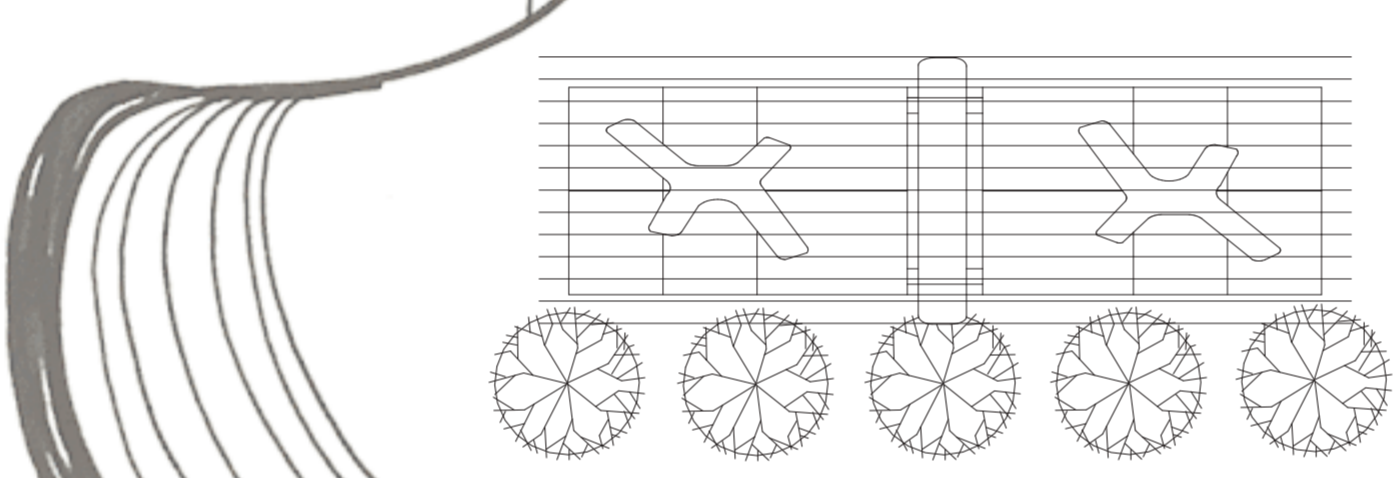
M A S U

T H E I N S T A L L A T I O N

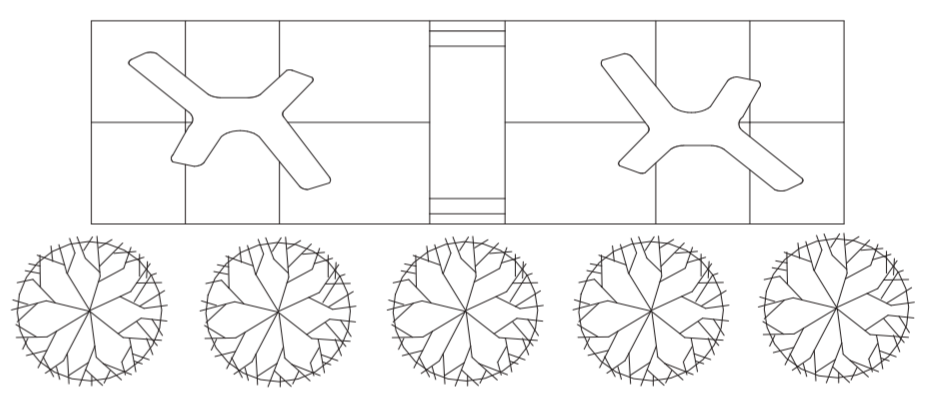
The installation under the roof of the pavillion is made from a fabric that would generate electricity from wind and sunlight. (as the fabric move it will create kenetic energy) This is casuing the pavillion itself to generate LED at night, so the pavillion is working in a cycle by creating that energy and using the energy that it made.



Plan with the glass roof



Plan with the glass roof off and you can see the installation under

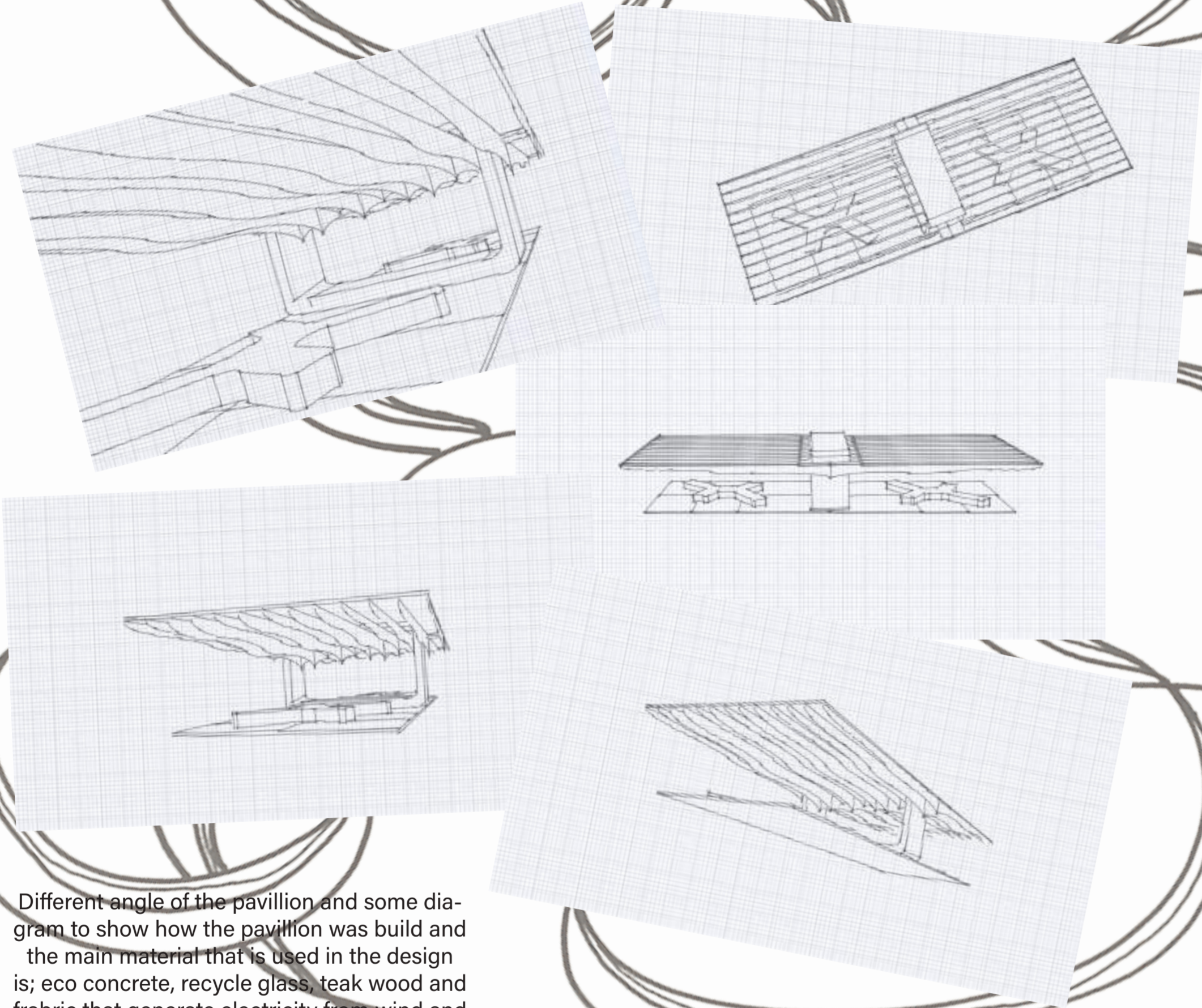


Plan with all the roof off and shows the seating area

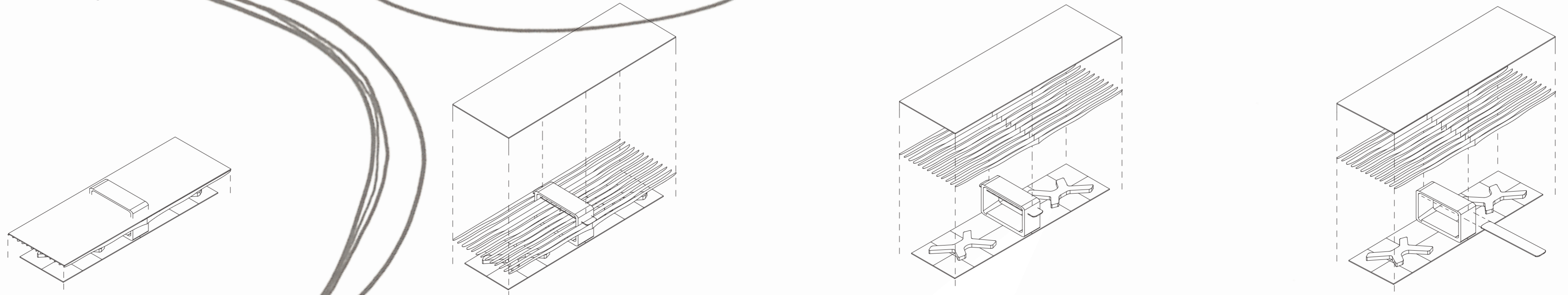


M A S U

E X P E R I M E N T S



Different angle of the pavillion and some dia-gram to show how the pavillion was built and the main material that is used in the design is; eco concrete, recycle glass, teak wood and frabric that generate electricity from wind and sunlight.



M A S U

V I S U A L

